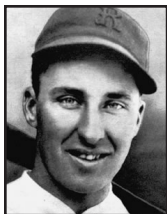


CLASS OF 1951



James "Rip" Collins

- FIRST BASEMAN -
Rochester 1926-30

- * IL Single Season RBI Record (180)
- * .337 Avg., 85 HR, 338 RBI in 384 G
- * Member of 3 IL Pennant Winners

After winning the first base job in Rochester in 1929, James "Rip" Collins became the first player to homer at the new Red Wing Stadium, the start of an incredible two year outburst for the Altoona, PA native. Collins hit .315 and led the League with 38 HR and 134 RBI in 1929. In 1930 he enjoyed possibly the greatest season in Red Wings history. Hitting an IL-best .376, Rip clubbed 40 HR with League record 180 RBI. His RBI total, plus his 234 hits and 426 total bases, remain Rochester records. Collins played over 1,000 Major League games after his IL career.



Al Mamaux

- PITCHER -
Reading 1923-24
Newark 1926-33
Albany 1935

- MANAGER -
Newark 1930-33
Albany 1935-36

- * IL ERA Champion 1926-27
- * Lifetime Record 132-65, 3.05 ERA
- * Managed 2 IL Pennant Winners

Few men in IL history have enjoyed the success as both a player and a manager achieved by Al Mamaux. The Pittsburgh native was the ace of the Newark Bears for the last half of the 20's. In 1926 he won 19 games and led the League with a 2.22 ERA. The following year was his best in the IL, leading the circuit in wins and ERA (25-10, 2.61 ERA). In 1930 Mamaux took over as manager of the Bears. His team won 310 games from 1931-33, including two pennants. During and after his career in the IL, Mamaux also performed as a Vaudeville singer.



Ed Onslow

- FIRST BASEMAN -
Providence 1913-17, 1925
Toronto 1918-24
Rochester 1925-27
Baltimore 1928-29
Newark 1929

- MANAGER -
Toronto 1922
Providence 1925
Rochester 1927

- * IL Alltime Hits Leader (2,445)
- * .317 Lifetime Average, 371 SB
- * Member of 2 IL Pennant Winners

In 1913 Providence signed a first baseman named Ed Onslow, marking the first of 17 consecutive years in the IL for the native of Meadville, PA. Onslow played for five different teams and set the League's career records for seasons (17), games (2,109), hits (2,445), and triples (129). Ironically he never led the IL in any offensive category for a single season. Onslow eclipsed .300 14 times, and had 11 seasons with at least 20 stolen bases. He also won 90 games as a player/manager for Toronto and Providence.

CLASS OF 1952



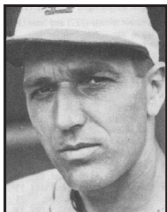
Billy Murray

- OUTFIELDER -
Buffalo 1886
Providence 1894-99

- MANAGER -
Providence 1894-1902
Jersey City 1903-06

- * Managed 4 IL Pennant Winners
- * Career Managerial Record 956-680
- * Led IL in Stolen Bases 1895-96

Billy Murray managed Providence to 3 IL pennants in nine years. In the first six seasons he also played outfield for the Grays, hitting over .300 twice and stealing more than 65 bases three times. In 1903 Murray took over the reigns of Jersey City, guiding the Skeeters to a 92-33 mark and the IL pennant in his first season. After three more winning campaigns in Jersey City, the Peabody, MA native was hired as manager of the Philadelphia Phillies, where he posted a .529 winning percentage in three years. His career mark in the IL was an amazing .584.

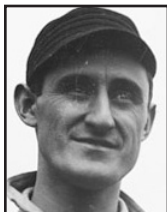


Jack Ogden

- PITCHER -
Newark 1918
Rochester 1919, 1933
Baltimore 1920-27, 1933-34

- * IL Career Leader in Victories (213)
- * IL Single Season CG Record (33)
- * Member of 5 IL Pennant Winners

Jack Ogden was a mainstay in the rotation of the great Baltimore Orioles' teams of the 20's. The right-hander from Ogden, PA led the League in victories four times (1920-22, 1926), including a record of 31-8 in 1921. Ogden pitched in 421 games in his IL career, posting a mark of 213-103 with a lifetime ERA of 3.36. His .674 winning percentage is the best in Minor League history for a pitcher with over 200 wins. He notched over 1,000 strikeouts and recorded over 200 complete games in the IL. His record of 33 complete games in 1921 has never been topped.



George Wiltse

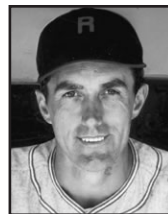
- PITCHER/FIRST BASE -
Jersey City 1915
Buffalo 1918-19
Reading 1926

- MANAGER -
Jersey City 1915
Buffalo 1918-24
Reading 1926

- * 673 Career Managerial Victories
- * 6 Straight Winning Seasons (1919-24)
- * Played in 224 Games

After a stellar Major League career in which he won in double figures eight straight years with the New York Giants, right-handed pitcher George "Hooks" Wiltse managed nine seasons in the International League, mostly with Buffalo. He retired as the winningest manager in Bisons history (he's now second only to Billy Clymer). The Hamilton, NY native earned his nickname not from his curveball, but from the way he reached out to snare line drives coming back through the box. "That's hooking them" his teammates would shout.

CLASS OF 1953



Estel Crabtree

- OUTFIELDER/INFIELDER -
Rochester 1933-40, 1942

- MANAGER -
Rochester 1940

- * .308 Lifetime Average, 542 RBI
- * Member of 1939 Gov. Cup Champs
- * 1,041 Career Hits in 934 Games

A constant in Rochester throughout the 1930's was Estel Crabtree, a fine defensive outfielder who was versatile enough to also play first and third base. The Crabtree, OH native emerged as Rochester's alltime leader in hits (1,041), RBI (542), and games (934). He clubbed 91 home runs, none more famous than a 9th inning three-run shot that propelled the Red Wings past Newark in the 1939 Governors' Cup Finals. Crabtree also served briefly as manager in 1940. In 1989 he was an inaugural inductee into the Rochester Red Wings Hall of Fame.



William Manley

IL Secretary/Treasurer
1929-52
IL Employee
1911-52

- * Served League for 42 Years
- * Officer of the League for 24 Years

William J. Manley served the International League for more than four decades, spanning the administrations of seven League Presidents. Manley first joined the circuit when it was known as the Eastern League in 1911 under President Ed Barrow. In 1929 Manley replaced Ernest Lanigan as the International League Secretary, and also served as League Treasurer until his death on November 1, 1952. Three months later Manley was elected posthumously to the International League Hall of Fame.



Fred Merkle

- FIRST BASEMAN -
Rochester 1921-25
Reading 1927

- MANAGER -
Reading 1927

- * Led IL in RBI 1922-23
- * .341 Lifetime Average, 62 HR
- * Eclipsed 200 Hits Each Year 1921-23

Fred Merkle was a veteran of 1,630 Major League games when he joined Rochester in 1921. The Watertown, WI native hit better than .340 each of his first four IL seasons, leading the circuit in RBI in 1922 (130) and 1923 (166). Merkle, forever remembered for his "bonehead" play during the 1908 National League pennant chase, forged out five great years in the IL at the end of his playing career. In 1927 he was given a chance to manage woeful Reading, only to be replaced shortly after a 31-game losing streak. Merkle was inducted into the IL Hall of Fame in 1953, three years before his death at the age of 67.